

WEEHAWKEN WATERFRONT WALKWAY

Increasing Safety for Cyclists, Pedestrians, and Road Users

ABOUT US

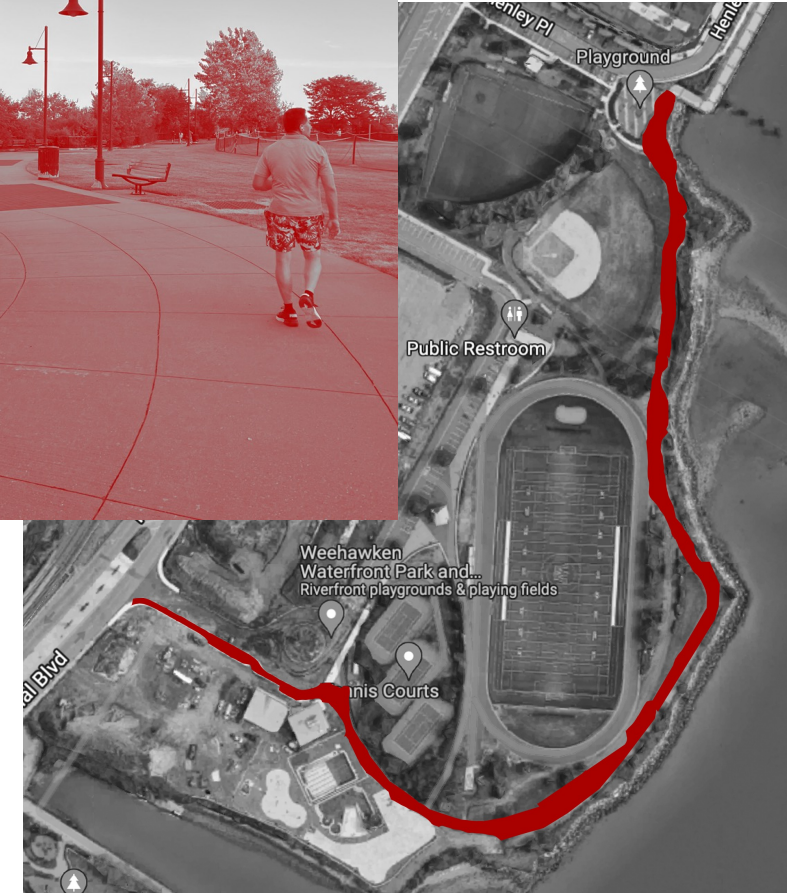
Our mission is to improve safety for cyclists, pedestrians, and road users. We believe that we can accomplish this mission by enhancing our streets by adopting a "Complete Streets" vision in the Township of Weehawken, adopted by Hudson County in 2012.



CONTEXT

At the time of the Weehawken Waterfront Park creation, a state required Hudson River Walkway was established surrounding the park to connect pedestrians, runners, and bicyclists alike connected to Hoboken on the South, and West New York to the North.

This path has been used for years until the Township of Weehawken installed private gates to the public walkway, citing issues with security to its own park.



PROBLEM

CLOSURE OF WALKWAY ACCESS

We've been made aware of and have confirmed during a recent site visit that the established Hudson River Waterfront Walkway has been blocked by the Township of Weehawken. This 'pathway for the people' has established a doctrine that we understand has an enforceable policy to maintain an 'unrestricted' walkway along the Hudson River (regardless of nearby construction not impacting the route). This path however was used for years until the Township of Weehawken installed private gates to the public walkway, citing issues with security to its own park.

Due to the closed walkway, Hudson County residents are being forced onto a narrow sidewalk along an extremely busy and dangerous sidewalk alongside Port Imperial Boulevard (River Road). When asked why the walkway is closed, the answers continue to be "construction". However, there was no construction occurring during the time the gates were installed nor any interference to the walkway today, given the proximity to current projects.



Closure of North Side of Walkway



Closure of North Side of Walkway



SOLUTION

INSTALL FENCE AROUND PARK (IN Red)

The concern with the Township of Weehawken has been around security at the Waterfront Park, and unfortunately the public walkway was integrated alongside it. The fix is to simply install a fence around the park itself, separating it from the waterfront walkway, enabling secure access to the park, but unobstructed access to the walkway.

REMOVE GATES

Remove both the North and South gates currently blocking access referenced on previous slide



SUMMARY

We recognize that this shared vision of safer cycling takes advocacy, education and a strong community of like-minded individuals, businesses, groups and influencers to achieve our goal of implementing a “Complete Streets” program beginning with with a protected bicycle lane on Port Imperial Boulevard in Weehawken.

THANK YOU